

**Serie | 6, Built-in washing machine, 8 kg, 1400 rpm  
WIW28302GB**



**Washing machine with EcoSilence Drive: enjoy very quiet operation and excellent durability.**

- **SpeedPerfect:** perfectly clean in up to 65% less time\*.
- **ActiveWater Plus:** For highly efficient use of water even with smaller loads thanks to automatic load detection.
- **EcoSilence Drive™:** quiet and energy-efficient drive, with a 10-year warranty.
- **AllergyPlus:** developed for allergy sufferers and people with sensitive skin.
- **VarioDrum:** gentle washing thanks to a unique drum structure.

**Technical Data**

Energy Efficiency Class: C  
 Weighted energy consumption in kWh per 100 washing cycles of eco 40-60 programme: 62 kWh  
 Maximum capacity in kg: 8.0 kg  
 The water consumption of the eco programme in liters per cycle: 45 l  
 Duration of eco 40-60 programme in hours and mins at rated capacity: 3:26 h  
 Spin-drying efficiency class of eco 40-60 programme: B  
 Airborne acoustical noise emission class: A  
 Airborne acoustical noise emissions : 66 dB(A) re 1 pW  
 Construction type: Built-in  
 Height of removable worktop: -2 mm  
 Dimensions of the product: 818 x 596 x 544 mm  
 Net weight: 76.1 kg  
 Connection rating: 2300 W  
 Fuse protection: 10 A  
 Voltage: 220-240 V  
 Frequency: 50 Hz  
 Approval certificates: CE, E17D UKCA marking, VDE  
 Length of electrical supply cord: 210 cm  
 Door hinge: Left  
 Wheels: No  
 EAN code: 4242005348343  
 Installation type: Full-integrated

**Optional accessories**

WMZ20441 : Height-adjustable feet  
 WMZ2200 : Floor securing component  
 WMZ2381 : Extension for cold water inlet /Aquastop



## Serie | 6, Built-in washing machine, 8 kg, 1400 rpm WIW28302GB

**Washing machine with EcoSilence Drive:  
enjoy very quiet operation and excellent  
durability.**

### Performance

- Energy Efficiency Class<sup>1</sup>: C
- Energy<sup>2</sup> / Water<sup>3</sup>: 62 kWh / 45 litres
- Load capacity: 1 - 8 kg
- Programme duration<sup>4</sup>: 3:26 h:min
- Spin drying efficiency class: B
- Spin speed<sup>\*\*</sup>: 400 - 1400 rpm
- Noise level: 66 dB (A) re 1 pW
- Noise efficiency class: A
- Fully integrated

### Programmes/functions

- Special programmes: Drain / Spin, Shirts, Mixed Load, Allergy +, Quiet Wash, Single Rinse, Handwash/Wool, 30°C

### Key features

- Touch control buttons: Ready in, SpeedPerfect, start/pause with reload function, Spin speed reduction

### Additional features

- Reload function: Flexibility to add or remove laundry items of any size even after start of the wash cycle.
- Large display for programme progress indication, spin speed, remaining time, 24 hour end time delay and load recommendation.
- EcoSilence drive with 10 year warranty
- AquaStop: Bosch home appliance with lifetime warranty against water damage\*
- Continuous automatic load adjustment system
- Foam detection system
- Safeguard monitoring system adjusts load distribution and programme settings to protect clothes
- Noise insulation: bottom cover
- AntiVibration Design - for more stability and quietness
- Detergent dispensing: easy clean
- Divider for Liquid Detergent
- Buzzer to indicate the end of cycle
- Large white door with 130° opening and 30 cm porthole
- Furniture door is reversible
- Metal door catch

### Technical Information

- adjustable base height: 15 cm
- adjustable base depth: 6.5 cm
- Dimensions (H X W X D): 81.8 x 59.6 x 57.4 cm
- Height adjustment with cardanDrive

<sup>1</sup> Scale of Energy Efficiency Classes from A to G

<sup>2</sup> Energy consumption in kWh per 100 cycles (in programme Eco 40-60)

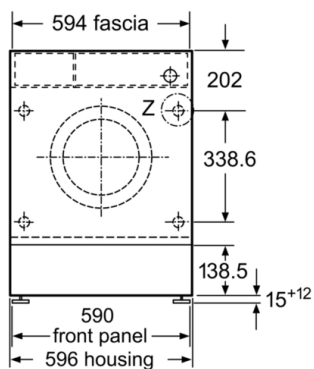
<sup>3</sup> Weighted water consumption in litres per cycle (in programme Eco 40-60)

<sup>4</sup> Duration of Eco 40-60 programme

<sup>\*\*</sup> Values are rounded.

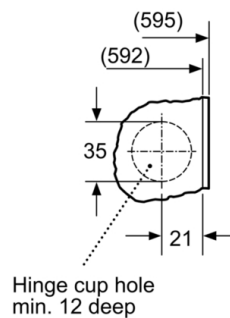
\* Please find warranty terms under the additional warranties section of our website.

**Serie | 6, Built-in washing machine, 8 kg,  
1400 rpm  
WIW28302GB**

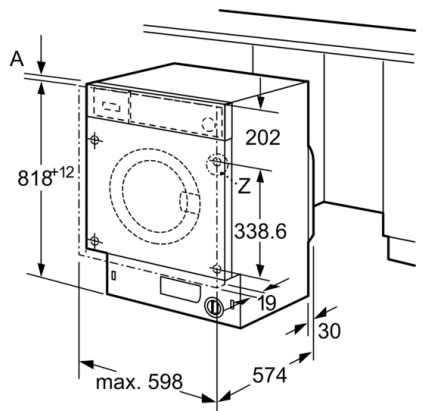


measurements in mm

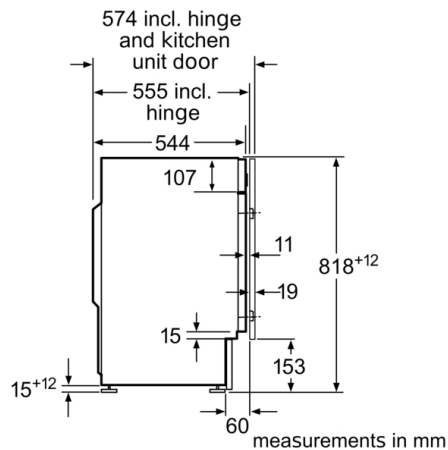
Z detail



measurements in mm



measurements in mm



measurements in mm